

# 7100 FORGED SERIES

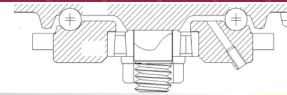
## 2,850 LBS



### FEATURES

**KINGPIN:** 3/4" diameter integral kingpin and nut  
**RACEWAY:** 7/16" diameter upper ball race with tapered roller thrust bearing  
**BUSHING:** Roller bearings with drilled hardened steel spanner bushing and steel side washers  
**AXLE&NUT:** 3/4" axle and lock nut

**FINISH:** Corrosion resistant bright zinc  
**LUBRICATION:** Grease nipple in lower race  
**HARDENED:** Drop forged hardened rolled in raceway  
**LEG SPACING:** 3"  
**SPECIAL:** Robotic welded. AISI 1045 drop forged steel top plate



### EXCELLENT FOR:

- Industrial platform trucks
- Abusive conditions
- Factory use
- Most hard working industrial functions
- Economical handling of heavy loads where severe abuse is present
- Waste bins
- Heavy material handling



ALTHANE™



MOLDON RUBBER



MOLDON URETHANE



PHENOLIC



SOLID STEEL



ENVIROTHANE™



ENVIROTHANE™ GREY



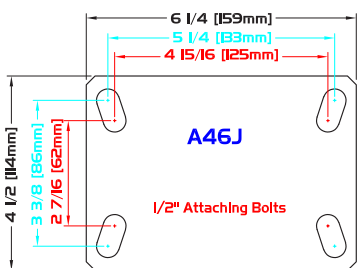
V GROOVE

### OPTIONS:

- TSB Thumb Screw Brake
- UWB Universal Wheel Brake
- 4PSL 4 Position Swivel Lock without wings (welded)
- BR Bronze Bearing
- DB Delrin Bearing
- PB Precision Ball Bearing
- SWH Heat-treated Side Washer
- TG Thread Guards
- Z Zerk in Axle

WHEEL		CASTER				PART NUMBER				
Diameter	Tread Width	Capacity Lbs.	Bearing Type	Swivel Radius	Overall Height	Wheel Type	Swivel	Caster Weight (lbs)	Rigid	Caster Weight (lbs)
6"	2 1/2"	700	Roller	5 9/32"	7 1/2"	Moldon Rubber	S7106-A46J-MR-RB	15.67	R7106-A46J-MR-RB	12.89
		1,200	Roller			Envirothane™	S7106-A46J-U-RB	12.47	R7106-A46J-U-RB	9.69
		1,200	Precision			Envirothane™ Grey - PB	S7106-A46J-UG-PB	12.31	R7106-A46J-UG-PB	9.53
		1,200	Roller			Envirothane™ Grey - RB	S7106-A46J-UG-RB	12.47	R7106-A46J-UG-RB	9.69
		1,300	Roller			ALTHane™	S7106-A46J-ALT-RB	11.67	R7106-A46J-ALT-RB	8.89
		1,600	Roller			Phenolic	S7106-A46J-PH-RB	13.37	R7106-A46J-PH-RB	10.59
		1,600	Roller			Moldon Urethane	S7106-A46J-UR-RB	16.39	R7106-A46J-UR-RB	13.61
		1,800	Roller			Solid Steel	S7106-A46J-SS-RB	19.59	R7106-A46J-SS-RB	16.81
		2,500	Roller			V Groove	S7106-A46J-VG-RB	18.07	R7106-A46J-VG-RB	15.29
		8"	2 1/2"			850	Roller	6 9/16"	10 1/8"	Moldon Rubber
1,400	Roller			ALTHane™	S7108-A46J-ALT-RB	13.73	R7108-A46J-ALT-RB			11.01
1,600	Roller			Envirothane™	S7108-A46J-U-RB	15.19	R7108-A46J-U-RB			12.47
1,600	Precision			Envirothane™ Grey - PB	S7108-A46J-UG-PB	14.88	R7108-A46J-UG-PB			12.16
1,600	Roller			Envirothane™ Grey - RB	S7108-A46J-UG-RB	15.19	R7108-A46J-UG-RB			12.47
1,800	Roller			Solid Steel	S7108-A46J-SS-RB	25.69	R7108-A46J-SS-RB			22.97
2,000	Roller			Phenolic	S7108-A46J-PH-RB	16.10	R7108-A46J-PH-RB			13.38
2,000	Roller			Moldon Urethane	S7108-A46J-UR-RB	22.05	R7108-A46J-UR-RB			19.33
2,500	Roller			V Groove	S7108-A46J-VG-RB	24.33	R7108-A46J-VG-RB			21.61

### PLATE DIAGRAMS



STANDARD PLATE: A46J

Plate Thickness: 3/8"