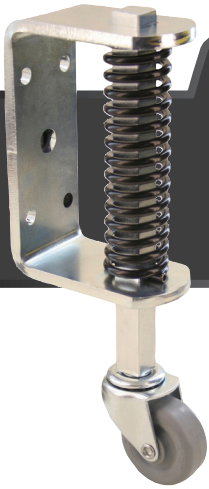




# GSL525

## 95LBS

GATE SPRING LOADED 0800-0900-1000-1900 SERIES



### GATE SPRING LOADED

TEMPERATURE: -45°F to 230°F  
 COLOURS: Black/Grey  
 DUROMETER: 45-65 (+/-) D scale

FINISH: Corrosion resistant bright zinc finish  
 DESCRIPTION: New Gate Spring Loaded Bracket

### CUSTOM SPRING LOADED PLATES



ENVIROTHANE™



ENVIROTHANE™  
GREY



SOFT RUBBER

#### EXCELLENT FOR:

- Residential or industrial gates
- Sliding or rotating industrial doors
- Heavy duty panels
- Test facilities
- Low profile side mounted applications

#### FINISHES:

Inquiries on other finishes welcome

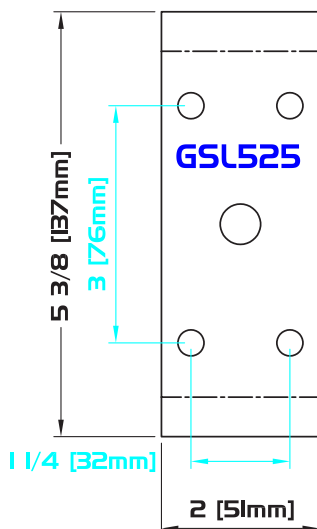
#### SPECIAL:

Works with any 437SX1 5/16" stem

WHEEL		CASTER				PART NUMBER		Caster Weight (lbs)
Diameter	Tread Width	Capacity Lbs.	Bracket Offset	Swivel Radius	Overall Height	Swivel		
			<b>"BO"</b>					
<b>0800 Series - SEE PAGES 39-40</b>								
<b>2"</b>	<b>7/8"</b>	0800 Series	2 1/2"	1 3/4"	2 9/16"	S0803-GSL525-WHEEL TYPE	Caster + 2.73	
<b>3"</b>	<b>7/8"</b>	0800 Series	2 1/2"	2 3/8"	3 9/16"	S0833-GSL525-WHEEL TYPE	Caster + 2.73	

### PLATE DIAGRAMS

5/16" Attaching Bolts



STANDARD PLATE: GSL525

### DEFLECTION CHARACTERISTICS

STANDARD DEFLECTION CHARACTERISTICS: 0800 Series

#### STANDARD DEFLECTION CHARACTERISTICS: 0800

- Maximum Deflection: 1 3/4"
- Maximum Load Capacity: 95 Lbs.

