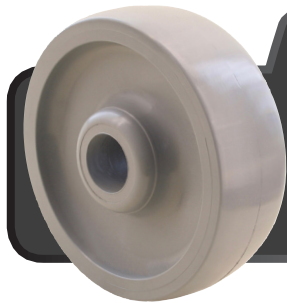




ENVIROTHANE™

WHEELS

75-1,600 LBS



FEATURES

BEARINGS: Plain, Nylon, Ball, Precision Ball Bearing, Roller Bearing
TEMPERATURE: -45°F to 230°F
COLOURS: U Black (standard), UG Grey (standard with PB)
 UB Blue, UR Red, UY Caution Yellow, GR Green
 Custom colours available, inquiries welcome.
DUROMETER: 55-65 D scale

DESCRIPTION: Envirothane™ wheels are used for high load capacities. Envirothane™ protects your floor and does not flat spot under static loads. Envirothane™ is non-corrosive, is excellent for abusive applications such as moist & wet environments and is resistant to most chemicals. Virtually maintenance free! Moisture friendly!

EXCELLENT FOR:

- Floor protection
- Factory use
- Moist & wet environments
- Platform & stock trucks
- Outdoor use & heavy loads
- Heavy material handling
- Smooth, easy rolling & longevity
- Towline applications
- Hotel & food service equipment
- Heavy material handling
- Abusive applications
- Ease of maneuverability
- Prolonging of equipment life
- Absorbs shock and vibrations

OPTIONS:

- A Alternative Hub
- BB Ball Bearing
- BBSS Stainless Steel Ball Bearing
- BR Bronze Bushing
- DB Delrin Bearing
- NB Nylon Roller Bearing
- PB Precision Ball Bearing
- PBSS Stainless Steel Precision Bearing
- RB Roller Bearing
- RBC Caged Roller Bearing
- RBSS Stainless Steel Roller Bearing
- SSW Steel Side Washer
- SWH Heat-treated Side Washer
- TG Thread Guards

SPECIAL:

- Resistant to most chemicals
- Non-marking under normal conditions
- Non-corrosive
- Moisture friendly
- Maintenance free
- One piece solid Envirothane™
- Good floor protection
- Crowned tread reduces amount of friction between tread & floor



WHEEL						PART NUMBER		
Diameter	Tread Width	Capacity Lbs.	Hub Length	Standard Bore	Alternative Bore	Bearing Type	Part Number	Wheel Weight (lbs)
1 3/4"	Ball	75	1 5/8"	1/4"	—	Nylon	W-0600-U	0.12
2"	Ball	75	1 27/32"	1/4"	—	Nylon	W-0650-U	0.17
	9/16"	100 100	1"	1/4" 1/4"	— 5/16" * 3/8" * 1/2"	Nylon Ball	W-0800-UT W-0800-UT-BB	0.09 0.22
	7/8"	125	1"	1/4"	3/8"	Nylon/Steel	W-0800-U	0.12
2 1/2"	9/16"	100 100	1"	1/4" 1/4"	— 5/16" * 3/8" * 1/2"	Nylon Ball	W-0820-UT W-0820-UT-BB	0.16 0.27
	7/8"	125	1"	1/4"	3/8"	Nylon/Steel	W-0820-U	0.15
2 5/8"	1 1/2"	400	1 9/16"	12mm	—	Roller	W-54260-UG-RB	0.37
3"	7/8"	125	1"	1/4"	3/8"	Nylon/Steel	W-0830-U	0.20
	1"	150 150 150	1 3/16" 1 3/8" 1 7/16"	5/16" 5/16" A 5/16"	3/8" * 1/2" 3/8" A * 1/2" A 3/8" * 1/2"	Nylon Nylon Ball	W-1030-U W-1030-U W-1030-U-BB	0.30 0.31 0.46
		350 350 350	1 3/8" 1 9/16" 1 5/8"	5/16" 5/16" A 5/16"	3/8" * 1/2" 3/8" A * 1/2" A 3/8" * 1/2"	Nylon Nylon Ball	W-1930-U W-1930-U W-1930-U-BB	0.35 0.36 0.53
	1 1/4"	500 500 500	1 5/8" 1 5/8" 1 13/16"	1 3/16" 3/8" 1/2"	— 5/16" * 1/2" 5/16" * 3/8" * 5/8" * 3/4"	Plain Delrin Roller	W-6203-U W-6203-U-DB W-6203-U-RB	0.37 0.45 0.67
		150 150 150	1 3/16" 1 3/8" 1 7/16"	5/16" 5/16" A 5/16"	3/8" * 1/2" 3/8" A * 1/2" A 3/8" * 1/2"	Nylon Nylon Ball	W-1040-U W-1040-U W-1040-U-BB	0.46 0.47 0.63
	1 1/4"	350 350 350	1 3/8" 1 9/16" 1 5/8"	5/16" 5/16" A 5/16"	3/8" * 1/2" 3/8" A * 1/2" A 3/8" * 1/2"	Nylon Nylon Ball	W-1940-U W-1940-U W-1940-U-BB	0.54 0.55 0.71

* Custom sizes available



ENVIROTHANE™

WHEELS

WHEELS

CUSTOM SIZES AVAILABLE

WHEEL						PART NUMBER		
Diameter	Tread Width	Capacity Lbs.	Hub Length	Standard Bore	Alternative Bore	Bearing Type	Part Number	Wheel Weight (lbs)
4"	1 1/2"	600	1 5/8"	1 3/16"	—	Plain	W-6204-U	0.62
		600	1 5/8"	3/8"	5/16" * 1/2"	Nylon	W-6204-U	0.64
		600	1 13/16"	1/2"	5/16" * 3/8" * 5/8" * 3/4"	Roller	W-6204-U-RB	0.92
		600	1 7/8"	1/2"	—	Precision	W-6204-UG-PB-TG	1.01
	2"	1,000	2 3/16"	1 3/16"	—	Plain	W-7004-U	0.82
		1,000	2 3/8"	1/2"	3/8" * 5/8" * 3/4"	Roller	W-7004-U-RB	1.26
		1,000	2 7/16"	1/2"	—	Precision	W-7004-UG-PB-TG	1.25
		1,000	2 3/16"	1 3/16"	—	Plain	W-7004-UGW	0.90
		1,000	2 3/8"	1/2"	3/8" * 5/8" * 3/4"	Roller	W-7004-UGW-RB	1.34
		1,000	2 7/16"	1/2"	—	Precision	W-7004-UGW-PB-TG	1.33
	5"	1"	1 3/16"	5/16"	3/8" * 1/2"	Nylon	W-1050-U	0.71
			1 3/8"	5/16" A	3/8" A * 1/2" A	Nylon	W-1050-U	0.72
			1 7/16"	5/16"	3/8" * 1/2"	Ball	W-1050-U-BB	0.87
		1 1/4"	1 3/8"	5/16"	3/8" * 1/2"	Nylon	W-1950-U	0.81
			1 9/16"	5/16" A	3/8" A * 1/2" A	Nylon	W-1950-U	0.82
			1 5/8"	5/16"	3/8" * 1/2"	Ball	W-1950-U-BB	0.98
		1 1/2"	1 5/8"	1 3/16"	—	Plain	W-6205-U	1.08
			1 5/8"	3/8"	5/16" * 1/2"	Nylon	W-6205-U	1.10
			1 13/16"	1/2"	5/16" * 3/8" * 5/8" * 3/4"	Roller	W-6205-U-RB	1.38
			1 7/8"	1/2"	—	Precision	W-6205-UG-PB-TG	1.47
		2"	1,000	2 3/16"	—	Plain	W-7005-U	1.30
			1,000	2 3/8"	3/8" * 5/8" * 3/4"	Roller	W-7005-U-RB	1.74
			1,000	2 7/16"	—	Precision	W-7005-UG-PB-TG	1.82
			1,000	2 3/16"	—	Plain	W-7005-UGW	1.20
			1,000	2 3/8"	3/8" * 5/8" * 3/4"	Roller	W-7005-UGW-RB	1.64
			1,000	2 7/16"	—	Precision	W-7005-UGW-PB-TG	1.72
	2 1/2"	1,100	2 3/4"	1 15/16"	—	Plain	W-7105-U	2.04
		1,100	2 27/32"	3/4"	1" * 1 1/4"	Roller	W-7105-U-RB	3.43
		1,100	3"	3/4"	—	Precision	W-7105-UG-PB-TG	3.34

* Custom sizes available

ENVIROTHANE™

WHEELS

WHEELS

CUSTOM SIZES AVAILABLE

WHEEL							PART NUMBER	
Diameter	Tread Width	Capacity Lbs.	Hub Length	Standard Bore	Alternative Bore	Bearing Type	Part Number	Wheel Weight (lbs)
6"	1 1/2"	800	1 5/8"	1 3/16"	—	Plain	W-6206-U	1.36
		800	1 5/8"	3/8"	1/2"	Delrin	W-6206-U-DB	1.55
		800	1 13/16"	1/2"	3/8" * 5/8" * 3/4"	Roller	W-6206-U-RB	1.66
		800	1 7/8"	1/2"	—	Precision	W-6206-U-PB-TG	1.80
	2"	950	2 7/16"	1/2"	—	Precision	W-7006-UGC-PB-TG	2.18
		1,100	2 3/16"	1 3/16"	—	Plain	W-7006-U	1.98
		1,100	2 3/8"	1/2"	3/8" * 5/8" * 3/4"	Roller	W-7006-U-RB	2.42
		1,100	2 7/16"	1/2"	—	Precision	W-7006-UG-PB-TG	2.23
		1,100	2 3/16"	1 3/16"	—	Plain	W-7006-UGW	1.61
		1,100	2 3/8"	1/2"	3/8" * 5/8" * 3/4"	Roller	W-7006-UGW-RB	2.05
		1,100	2 7/16"	1/2"	—	Precision	W-7006-UGW-PB-TG	2.13
	2 1/2"	1,200	2 3/4"	1 15/16"	—	Plain	W-7106-U	2.40
		1,200	2 27/32"	3/4"	1" * 1 1/4"	Roller	W-7106-U-RB	4.05
		1,200	3"	3/4"	—	Precision	W-7106-UG-PB-TG	3.96
8"	2"	1,100	2 7/16"	1/2"	—	Precision	W-7008-UGC-PB-TG	3.37
		1,200	2 3/16"	1 3/16"	—	Plain	W-7008-U	2.94
		1,200	2 3/8"	1/2"	3/8" * 5/8" * 3/4"	Roller	W-7008-U-RB	3.38
		1,200	2 7/16"	1/2"	—	Precision	W-7008-UG-PB-TG	3.41
		1,200	2 3/16"	1 3/16"	—	Plain	W-7008-UGW	2.70
		1,200	2 3/8"	1/2"	3/8" * 5/8" * 3/4"	Roller	W-7008-UGW-RB	3.14
		1,200	2 7/16"	1/2"	—	Precision	W-7008-UGW-PB-TG	3.22
	2 1/2"	1,600	2 3/4"	1 15/16"	—	Plain	W-7108-U	4.36
		1,600	2 27/32"	3/4"	1" * 1 1/4"	Roller	W-7108-U-RB	6.01
		1,600	3"	3/4"	—	Precision	W-7108-UG-PB-TG	5.70

* Custom sizes available