



HIGH TEMP LAVA™ WHEELS

400-3,500 LBS



FEATURES

BEARINGS: Plain, Ball, Precision, Roller Bearing, Caged Roller Bearing
TEMPERATURE: -45°F to 475°F continuously, 525°F intermittently
COLOURS: Black
DESCRIPTION: This non-marking wheel features an exclusively developed proprietary nylon material which is excellent for high load capacities.

The LAVA™ wheel is extremely ergonomically efficient, as it requires minimum effort to roll and swivel with heavy loads. LAVA™ wheel resists hard impacts and is resistant to most chemicals, solvents, gases, acids, steam cleaning and does not absorb water! This wheel is ideal for industrial and institutional applications.

DUROMETER: 85 (+/-5) D scale

EXCELLENT FOR:

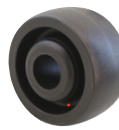
- Floor protection
- Factory use
- Push/Pull Ease
- Waste bins
- Platform and Stock trucks
- High temperature applications
- Heavy material handling
- Smooth, easy rolling
- Abusive applications
- Bakery applications
- Prolonging of equipment life



LAVA™



LAVA™(LVW)



LAVA™(LVW)



LAVA™(LVW)



LAVA™(LVW)

OPTIONS:

- BB Ball Bearing
- BBHT Heat-treated Ball Bearing (2" wheel tread)
- BR Bronze Bushing
- PBB Precision Ball Bearing (for LVW 3" wheel tread only)
- RB Roller Bearing
- RBC Caged Roller Bearing
- RBSS Stainless Steel Roller Bearing
- SWH Heat-treated Side Washer
- T Through Bore (2" wheel tread)
- TB Tapered Bearing (3" wheel tread)

SPECIAL:

- Resistant to most chemicals
- Non-marking
- Debris rejecting tread
- Moisture Friendly
- Maintenance free
- One piece solid LAVA™
- Same capacity as steel wheels

WHEEL

PART NUMBER

Diameter	Tread Width	Capacity Lbs.	Hub Length	Standard Bore	Alternative Bore	Bearing Type	Part Number	Wheel Weight (lbs)	
3"	1 1/4"	400	1 9/16"	1/2"	-	Plain Steel	W-1930-LV	0.30	
		400	1 9/16"	5/16"	3/8"	Steel	W-1930-LV	0.34	
	1 1/2"	600	1 5/8"	3/8"	5/16"	Steel	W-6203-LV	0.50	
		600	1 5/8"	1 3/16"	1/2" * 5/8"	Plain	W-6203-LV	0.42	
		600	1 13/16"	1/2"	3/8" * 5/8" * 3/4"	Roller	W-6203-LV-RB	0.82	
	4"	1 1/4"	800	2 3/16"	1 3/16"	-	Plain	W-7003-LVW*	0.56
800			2 3/8"	3/4"	-	Plain	W-7003-LVW	1.30	
2"		800	2 3/8"	1/2"	5/8" * 3/4"	Roller	W-7003-LVW-RB	1.01	
		1 1/4"	400	1 9/16"	1/2"	-	Plain	W-1940-LV	0.45
			400	1 9/16"	5/16"	3/8"	Steel	W-1940-LV	0.49
1 1/2"		700	1 5/8"	3/8"	5/16"	Steel	W-6204-LV	0.73	
	700	1 5/8"	1 3/16"	1/2" * 5/8"	Plain	W-6204-LV	0.71		
	700	1 13/16"	1/2"	3/8" * 5/8" * 3/4"	Roller	W-6204-LV-RB	1.11		
5"	1 1/4"	800	2 3/16"	1 3/16"	-	Plain	W-7004-LV*	0.63	
		800	2 3/8"	1/2"	5/8" * 3/4"	Roller	W-7004-LV-RB	1.12	
	2"	900	2 3/16"	1 3/16"	-	Plain	W-7004-LVW*	0.89	
		900	2 3/8"	3/4"	-	Plain	W-7004-LVW	0.94	
		900	2 3/8"	1/2"	5/8" * 3/4"	Roller	W-7004-LVW-RB	1.33	
	1 1/2"	1 1/4"	400	1 9/16"	1/2"	-	Plain	W-1950-LV	0.65
400			1 9/16"	5/16"	3/8"	Steel	W-1950-LV	0.69	
800		800	1 5/8"	3/8"	5/16"	Steel	W-6205-LV	1.05	
		800	1 5/8"	1 3/16"	1/2" * 5/8"	Plain	W-6205-LV	0.76	
800	1 13/16"	1/2"	3/8" * 5/8" * 3/4"	Roller	W-6205-LV-RB	1.37			

◆ wheel has one closed side to eliminate side washer and for easier assembly



WHEELS

WHEEL						PART NUMBER		
Diameter	Tread Width	Capacity Lbs.	Hub Length	Standard Bore	Alternative Bore	Bearing Type	Part Number	Wheel Weight (lbs)
5"	2"	800	2 3/16"	1 3/16"	-	Plain Roller	W-7005-LV*	0.84
		800	2 3/8"	1/2"	5/8" ** 3/4"		W-7005-LV-RB	1.33
		1,100	2 3/16"	1 3/16"	-	Plain	W-7005-LVW*	1.20
		1,100	2 3/8"	3/4"	-		W-7005-LVW	1.38
	1,100	2 3/8"	1/2"	5/8" ** 3/4"	Roller	W-7005-LVW-RB	1.64	
	1,500	3 1/4"	1 15/16"	-		Plain Precision Ball Roller Tapered	W-7505-LVW	2.28
	1,500	3 7/16"	3/4"	-	W-7505-LVW-PBB		3.45	
	1,500	3 7/16"	3/4"	1" * 1 1/4"	W-7505-LVW-RB		4.17	
1,500	3 1/4"	3/4"	1" * 1 1/4"	W-7505-LVW-TB	2.84			
6"	2"	1,100	2 3/16"	1 3/16"	-	Plain Roller	W-7006-LV*	1.06
		1,100	2 3/8"	1/2"	5/8" ** 3/4"		W-7006-LV-RB	1.55
		1,200	2 3/16"	1 3/16"	-	Plain	W-7006-LVW*	1.64
		1,200	2 3/8"	3/4"	-		W-7006-LVW	1.53
	1,200	2 3/8"	1/2"	5/8" ** 3/4"	Roller	W-7006-LVW-RB	2.04	
	1,750	3 1/4"	1 15/16"	-		Plain Precision Ball Roller Tapered	W-7506-LVW	2.69
	1,750	3 7/16"	3/4"	-	W-7506-LVW-PBB		3.86	
	1,750	3 7/16"	3/4"	1" * 1 1/4"	W-7506-LVW-RB		4.58	
1,750	3 1/4"	3/4"	1" * 1 1/4"	W-7506-LVW-TB	3.25			
8"	2"	1,200	2 3/16"	1 3/16"	-	Plain Roller	W-7008-LV*	1.84
		1,200	2 3/8"	1/2"	5/8" ** 3/4"		W-7008-LV-RB	2.33
		1,300	2 3/16"	1 3/16"	-	Plain	W-7008-LVW*	2.25
		1,300	2 3/8"	3/4"	-		W-7008-LVW	2.43
	1,300	2 3/8"	1/2"	5/8" ** 3/4"	Roller	W-7008-LVW-RB	2.69	
	2,100	3 1/4"	1 15/16"	-		Plain Precision Ball Roller Tapered	W-7508-LVW	4.25
	2,100	3 7/16"	3/4"	-	W-7508-LVW-PBB		5.42	
	2,100	3 7/16"	3/4"	1" * 1 1/4"	W-7508-LVW-RB		6.14	
2,100	3 1/4"	3/4"	1" * 1 1/4"	W-7508-LVW-TB	4.81			
10"	2 1/2"	2,100	2 3/4"	1 15/16"	-	Plain Roller	W-7110-LVW	4.58
		2,100	2 27/32"	3/4"	1" * 1 1/4"		W-7110-LVW-RB	6.23
	3"	2,800	3 1/4"	1 15/16"	-	Plain Precision Ball Roller	W-7510-LVW	6.45
		2,800	3 7/16"	3/4"	-		W-7510-LVW-PBB	7.62
		2,800	3 7/16"	3/4"	1" * 1 1/4"	Roller Tapered	W-7510-LVW-RB	8.34
		2,800	3 1/4"	3/4"	1" * 1 1/4"		W-7510-LVW-TB	7.01
12"	3"	3,500	3 1/4"	1 15/16"	-	Plain Precision Ball Roller	W-7512-LVW	9.87
		3,500	3 7/16"	3/4"	-		W-7512-LVW-PBB	11.04
		3,500	3 7/16"	3/4"	1" * 1 1/4"	Roller Tapered	W-7512-LVW-RB	11.76
		3,500	3 1/4"	3/4"	1" * 1 1/4"		W-7512-LVW-TB	10.43

◆ wheel has one closed side to eliminate side washer and for easier assembly