



ROLLX™

WHEELS

400-6,500 LBS



FEATURES

BEARINGS: Plain, Ball, Delrin, Nylon, Precision, Roller, Caged Roller
TEMPERATURE: -45°F to 180°F (with Plastic Side Washer)
 -45°F to 250°F (with Steel Side Washer)
COLOURS: Black
DESCRIPTION: This non-marking wheel features an exclusively developed thermoplastic nylon material which is excellent for high load capacities.

The RollX™ wheel is extremely ergonomically efficient, as it requires minimum effort to roll and swivel with heavy loads. It resists hard impacts and is resistant to most chemicals, solvents, gases, acids, steam cleaning and does not absorb water! This wheel is ideal for industrial and institutional applications.

DUROMETER: 85 (+/-5) D Scale

EXCELLENT FOR:

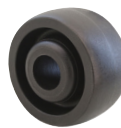
- Floor protection
- Factory use
- Push/Pull Ease
- Moist and wet environments
- Waste bins
- Platform and Stock trucks
- Outdoor use and heavy loads
- Heavy material handling
- Smooth, easy rolling and longevity
- Towline applications
- Abusive applications
- Ease of maneuverability
- Prolonging of equipment life



ROLLX™



ROLLX™(for WOW)



ROLLX™(WOW)



ROLLX™(WOW)



ROLLX™(WOW)

OPTIONS:

- BB Ball Bearing
- BR Bronze Bushing
- DB Delrin Bearing
- NB Nylon Roller Bearing
- NBSS Stainless Steel Nylon Roller Bearing
- PB Precision Ball Bearing (for 6" RXW wheel only)
- PBB Precision Ball Bearing (for RXW 3" wheel tread only)
- RB Roller Bearing
- RBC Caged Roller Bearing
- RBSS Stainless Steel Roller Bearing
- SSW Steel Side Washer
- SWH Heat-treated Side Washer
- T Through Bore (2" wheel tread)
- TB Tapered Bearing (3" wheel tread)
- TG Thread Guards

SPECIAL:

- Resistant to most chemicals
- Non-marking
- Debris rejecting tread
- Moisture Friendly
- Maintenance free
- One piece solid RollX™
- Same capacity as steel wheels
- Easy to assemble

| WHEEL | | | | | | | PART NUMBER | | |
|----------|-------------|---------------|----------------------|---------------|----------------------|----------------------|--------------------|--------------------|------|
| Diameter | Tread Width | Capacity Lbs. | Hub Length | Standard Bore | Alternative Bore | Bearing Type | Part Number | Wheel Weight (lbs) | |
| 2 5/8" | 1 1/2" | 550 | 1 9/16" | 12mm | - | Roller | W-54260-RX-RB-12MM | 0.43 | |
| 3" | 1 1/4" | 400 | 1 9/16" | 1/2" | - | Plain | W-1930-RX | 0.32 | |
| | | 400 | 1 9/16" | 5/16" | 3/8" | Steel | W-1930-RX | 0.36 | |
| | 1 1/2" | 700 | 1 5/8" | 3/8" | 5/16" | Steel | W-6203-RX | 0.48 | |
| | | 700 | 1 5/8" | 1 3/16" | 1/2" ** 5/8" | Plain | W-6203-RX | 0.42 | |
| | | 700 | 1 13/16" | 1/2" | 3/8" ** 5/8" ** 3/4" | Roller | W-6203-RX-RB | 0.82 | |
| | 2" | 1 1/4" | 1,200 | 2 3/16" | 1 3/16" | - | Plain | W-7003-RXW* | 0.56 |
| 1,200 | | | 2 3/8" | 3/4" | - | Plain | W-7003-RXW | 1.30 | |
| 4" | 1 1/4" | 1,200 | 2 3/8" | 1/2" | 5/8" ** 3/4" | Roller | W-7003-RXW-RB | 1.01 | |
| | | 450 | 1 9/16" | 1/2" | - | Plain | W-1940-RX | 0.47 | |
| | 1 1/2" | 450 | 1 9/16" | 5/16" | 3/8" | Steel | W-1940-RX | 0.52 | |
| | | 700 | 1 5/8" | 3/8" | 5/16" | Steel | W-6204-RX | 0.77 | |
| | | 700 | 1 5/8" | 1 3/16" | 1/2" ** 5/8" | Plain | W-6204-RX | 0.71 | |
| | 2" | 1 1/2" | 700 | 1 13/16" | 1/2" | 3/8" ** 5/8" ** 3/4" | Roller | W-6204-RX-RB | 1.11 |
| | | | 800 | 2 3/16" | 1 3/16" | - | Plain | W-7004-RX* | 0.63 |
| | | | 800 | 2 3/8" | 1/2" | 5/8" ** 3/4" | Roller | W-7004-RX-RB | 0.98 |
| | | 1,400 | 1,400 | 2 3/16" | 1 3/16" | - | Plain | W-7004-RXW* | 0.89 |
| | | | 1,400 | 2 3/8" | 3/4" | - | Plain | W-7004-RXW | 0.94 |
| 1,400 | 2 3/8" | 1/2" | 5/8" ** 3/4" | Roller | W-7004-RXW-RB | 1.33 | | | |
| 5" | 1 1/4" | 500 | 1 9/16" | 1/2" | - | Plain | W-1950-RX | 0.67 | |
| | | 500 | 1 9/16" | 5/16" | 3/8" | Steel | W-1950-RX | 0.72 | |
| | 1 1/2" | 800 | 1 5/8" | 3/8" | 5/16" | Steel | W-6205-RX | 1.05 | |
| | | 800 | 1 5/8" | 1 3/16" | 1/2" ** 5/8" | Plain | W-6205-RX | 0.76 | |
| 800 | 1 13/16" | 1/2" | 3/8" ** 5/8" ** 3/4" | Roller | W-6205-RX-RB | 1.37 | | | |

◆ wheel has one closed side to eliminate side washer and for easier assembly



WHEELS

| WHEEL | | | | | | PART NUMBER | | | |
|----------|-------------|---------------|------------|---------------|------------------|--------------|----------------|--------------------|-------|
| Diameter | Tread Width | Capacity Lbs. | Hub Length | Standard Bore | Alternative Bore | Bearing Type | Part Number | Wheel Weight (lbs) | |
| 5" | 2" | 1,000 | 2 3/16" | 1 3/16" | - | Plain | W-7005-RX* | 0.84 | |
| | | 1,000 | 2 3/8" | 1/2" | 5/8" * 3/4" | Roller | W-7005-RX-RB | 1.18 | |
| | | 1,600 | 2 3/16" | 1 3/16" | - | Plain | W-7005-RXW* | 1.20 | |
| | | 1,600 | 2 3/8" | 3/4" | - | Plain | W-7005-RXW | 1.38 | |
| | 2 1/2" | 3" | 1,600 | 2 3/8" | 1/2" | 5/8" * 3/4" | Roller | W-7005-RXW-RB | 1.64 |
| | | | 2,200 | 2 3/4" | 1 15/16" | - | Plain | W-7105-RX | 1.62 |
| | | | 2,200 | 2 27/32" | 3/4" | 1" * 1 1/4" | Roller | W-7105-RX-RB | 3.27 |
| | | | 2,750 | 3 1/4" | 1 15/16" | - | Plain | W-7505-RXW | 2.28 |
| | 3" | 3" | 2,750 | 3 7/16" | 3/4" | - | Precision Ball | W-7505-RXW-PBB | 3.45 |
| | | | 2,750 | 3 7/16" | 3/4" | 1" * 1 1/4" | Roller | W-7505-RXW-RB | 4.17 |
| | | | 2,750 | 3 7/16" | 3/4" | 1" * 1 1/4" | Tapered | W-7505-RXW-TB | 2.84 |
| | | | 2,750 | 3 1/4" | 3/4" | 1" * 1 1/4" | Tapered | W-7505-RXW-TB | 2.84 |
| 6" | 2" | 1,200 | 2 3/16" | 1 3/16" | - | Plain | W-7006-RX* | 1.06 | |
| | | 1,200 | 2 3/8" | 1/2" | 5/8" * 3/4" | Roller | W-7006-RX-RB | 1.40 | |
| | | 2,000 | 2 3/16" | 1 3/16" | - | Plain | W-7006-RXW* | 1.64 | |
| | | 2,000 | 2 3/8" | 3/4" | - | Plain | W-7006-RXW | 1.53 | |
| | 3" | 3" | 2,000 | 2 3/8" | 1/2" | 3/4" | Precision | W-7006-RXW-PB | 2.11 |
| | | | 2,000 | 2 3/8" | 1/2" | 5/8" * 3/4" | Roller | W-7006-RXW-RB | 2.04 |
| | | | 3,250 | 3 1/4" | 1 15/16" | - | Plain | W-7506-RXW | 2.69 |
| | | | 3,250 | 3 7/16" | 3/4" | - | Precision Ball | W-7506-RXW-PBB | 3.86 |
| | 3" | 3" | 3,250 | 3 7/16" | 3/4" | 1" * 1 1/4" | Roller | W-7506-RXW-RB | 4.58 |
| | | | 3,250 | 3 1/4" | 3/4" | 1" * 1 1/4" | Tapered | W-7506-RXW-TB | 3.25 |
| | | | 1,400 | 2 3/16" | 1 3/16" | - | Plain | W-7008-RX* | 1.84 |
| | | | 1,400 | 2 3/8" | 1/2" | 5/8" * 3/4" | Roller | W-7008-RX-RB | 2.10 |
| 8" | 2" | 2,000 | 2 3/16" | 1 3/16" | - | Plain | W-7008-RXW* | 2.25 | |
| | | 2,000 | 2 3/8" | 3/4" | - | Plain | W-7008-RXW | 2.43 | |
| | | 2,000 | 2 3/8" | 1/2" | 5/8" * 3/4" | Roller | W-7008-RXW-RB | 2.69 | |
| | | 2,000 | 2 3/8" | 1/2" | 5/8" * 3/4" | Roller | W-7008-RXW-RB | 2.69 | |
| | 3" | 3" | 4,000 | 3 1/4" | 1 15/16" | - | Plain | W-7508-RXW | 4.25 |
| | | | 4,000 | 3 7/16" | 3/4" | - | Precision Ball | W-7508-RXW-PBB | 5.42 |
| | | | 4,000 | 3 7/16" | 3/4" | 1" * 1 1/4" | Roller | W-7508-RXW-RB | 6.14 |
| | | | 4,000 | 3 1/4" | 3/4" | 1" * 1 1/4" | Tapered | W-7508-RXW-TB | 4.81 |
| 10" | 2 1/2" | 4,000 | 2 3/4" | 1 15/16" | - | Plain | W-7110-RXW | 4.58 | |
| | | 4,000 | 2 27/32" | 3/4" | 1" * 1 1/4" | Roller | W-7110-RXW-RB | 6.23 | |
| | 3" | 3" | 5,250 | 3 1/4" | 1 15/16" | - | Plain | W-7510-RXW | 6.45 |
| | | | 5,250 | 3 7/16" | 3/4" | - | Precision Ball | W-7510-RXW-PBB | 7.62 |
| | | | 5,250 | 3 7/16" | 3/4" | 1" * 1 1/4" | Roller | W-7510-RXW-RB | 8.34 |
| | | | 5,250 | 3 1/4" | 3/4" | 1" * 1 1/4" | Tapered | W-7510-RXW-TB | 7.01 |
| | 12" | 3" | 6,500 | 3 1/4" | 1 15/16" | - | Plain | W-7512-RXW | 9.87 |
| | | | 6,500 | 3 7/16" | 3/4" | - | Precision Ball | W-7512-RXW-PBB | 11.04 |
| 6,500 | | | 3 7/16" | 3/4" | 1" * 1 1/4" | Roller | W-7512-RXW-RB | 11.76 | |
| 6,500 | | | 3 1/4" | 3/4" | 1" * 1 1/4" | Tapered | W-7512-RXW-TB | 10.43 | |

◆ wheel has one closed side to eliminate side washer and for easier assembly