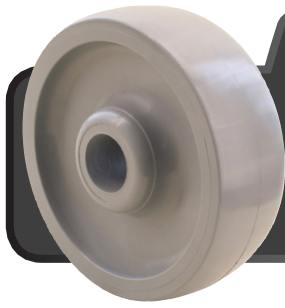




# ENVIROTHANE™ HD

## WHEELS 1,050-3,600LBS



### FEATURES

**BEARINGS:** Roller Bearing, Precision Ball Bearing, Tapered Bearing  
**TEMPERATURE:** -45°F to 200°F  
**COLOURS:** Grey (standard)  
 Custom colours available, inquiries welcome.  
**DUROMETER:** 80D Durometer (+/-5)

**DESCRIPTION:** Envirothane™ HD wheels are used for high load capacities. Envirothane™ HD protects your floor and does not flat spot under static loads. Envirothane™ HD is non-corrosive, is excellent for abusive applications such as moist & wet environments and is resistant to most chemicals. Virtually maintenance free! Moisture friendly!

### EXCELLENT FOR:

- Floor protection
- Factory use
- Moist & wet environments
- Platform & stock trucks
- Outdoor use & heavy loads
- Heavy material handling
- Smooth, easy rolling & longevity
- Towline applications
- Hotel & food service equipment
- Heavy material handling
- Abusive applications
- Ease of maneuverability
- Prolonging of equipment life
- Absorbs shock and vibrations



ENVIROTHANE™ HD

### OPTIONS:

- A Alternative Hub
- BB Ball Bearing
- BSSS Stainless Steel Ball Bearing
- BR Bronze Bushing
- DB Delrin Bearing
- NB Nylon Roller Bearing
- PB Precision Ball Bearing
- PBSS Stainless Steel Precision Bearing
- RB Roller Bearing
- RBC Caged Roller Bearing
- RBSS Stainless Steel Roller Bearing
- SSW Steel Side Washer
- SWH Heat-treated Side Washer
- TG Thread Guards

### SPECIAL:

- Resistant to most chemicals
- Non-marking under normal conditions
- Non-corrosive
- Moisture friendly
- Maintenance free
- One piece solid Envirothane™ HD
- Good floor protection
- Crowned tread reduces amount of friction between tread & floor

WHEEL						PART NUMBER		
Diameter	Tread Width	Capacity Lbs.	Hub Length	Standard Bore	Alternative Bore	Bearing Type	Part Number	Wheel Weight (lbs)
3"	2"	1,050	1 13/16"	1/2"	-	Precision	W-7003-UGH-PB	0.86
4"	2"	1,050	2 3/8"	1/2"	-	Precision	W-7004-UGH-PB	1.15
5"	2"	1,200	2 3/8"	1/2"	-	Precision	W-7005-UGH-PB	1.53
6"	2"	1,500	2 3/8"	1/2"	3/4"	Precision	W-7006-UGH-PB	1.87
	2 1/2"	2,300	2 27/32"	3/4"	-	Precision	W-7106-UGH-PB	3.55
	3"	2,750	2 27/32"	3/4"	1"	Precision	W-7506-UGH-PBB	3.70
8"	2"	1,800	2 3/16"	1/2"	-	Precision	W-7008-UGH-PB	2.98
	2 1/2"	2,400	3 7/16"	3/4"	-	Precision	W-7108-UGH-PB	5.53
	3"	3,000	3 7/16"	3/4"	1"	Precision	W-7508-UGH-PBB	4.83
10"	2 1/2"	3,000	2 27/32"	3/4"	-	Precision	W-7110-UGH-PBB	7.41
	3"	3,400	3 7/16"	3/4"	1"	Precision	W-7510-UGH-PBB	6.81
12"	3"	3,600	3 7/16"	3/4"	1"	Precision	W-7512-UGH-PBB	7.83

