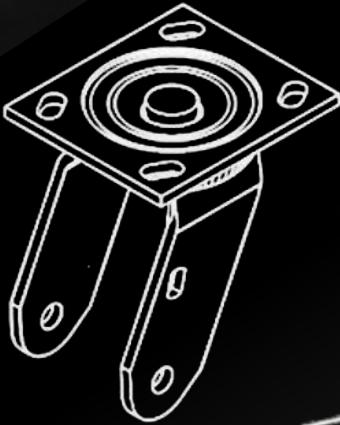
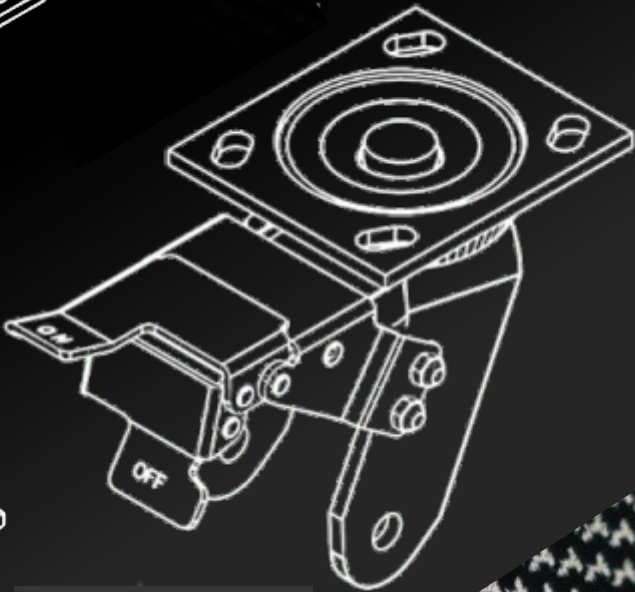


1200 LBS

GP620S



GP620S-TL



GP620R



TPE WHEEL  
- 30° TO 70°C  
80A +/- 3



MPU WHEEL  
- 20° TO 120°C  
98A +/- 3



NY WHEEL  
- 20° TO 120°C  
67D +/- 3



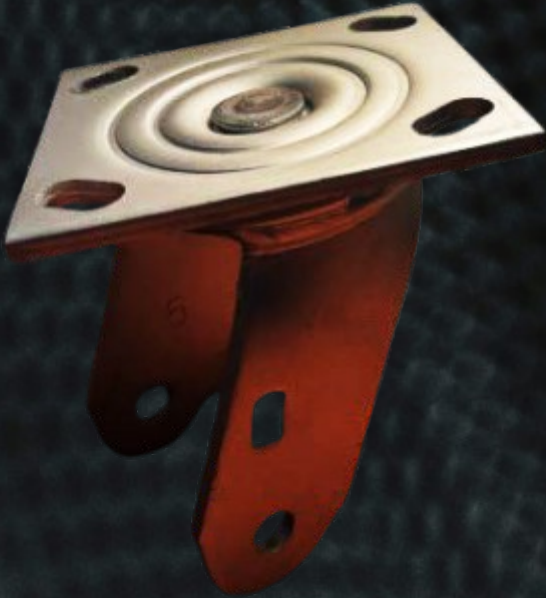
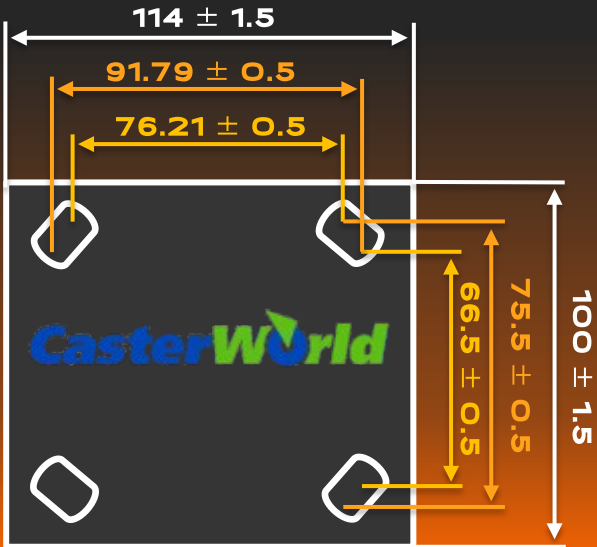
NYHD WHEEL  
- 20° TO 120°C  
67D +/- 3



PART NUMBER

SIZE	TREAD WIDTH	MATERIAL	BEARING TYPE	CAPACITY (LBS)	OVERALL HEIGHT	SWIVEL RADIUS	SWIVEL	RIGID
5"	2"		6203 SEALED PRECISION BEARINGS	660	6.5"	108	GP520S-TPE-PB	GP520R-TPE-PB
6"				770	7.5"	121	GP620S-TPE-PB	GP620R-TPE-PB
8"				880	9.5"	152	GP820S-TPE-PB	GP820R-TPE-PB
4"	2"		6203 SEALED PRECISION BEARINGS	770	5.625"	91	GP420S-MPU-PB	GP420R-MPU-PB
5"				835	6.5"	108	GP520S-MPU-PB	GP520R-MPU-PB
6"				925	7.5"	121	GP620S-MPU-PB	GP620R-MPU-PB
8"				990	9.5"	152	GP820S-MPU-PB	GP820R-MPU-PB
4"	2"		6203 SEALED PRECISION BEARINGS	835	5.625"	91	GP420S-NY-PB	GP420R-NY-PB
5"				880	6.5"	108	GP520S-NY-PB	GP520R-NY-PB
6"				925	7.5"	121	GP620S-NY-PB	GP620R-NY-PB
8"				990	9.5"	152	GP820S-NY-PB	GP820R-NY-PB
4"	2"		6204 SEALED PRECISION BEARINGS	1200	5.625"	91	GP420S-NYHD-PB	GP420R-NYHD-PB
5"				1200	6.5"	108	GP520S-NYHD-PB	GP520R-NYHD-PB
6"				1200	7.5"	121	GP620S-NYHD-PB	GP620R-NYHD-PB
8"				1200	9.5"	152	GP820S-NYHD-PB	GP820R-NYHD-PB

TOP PLATE



TOP PLATE DIMENSION:  
4"X4 1/2"

BOLT HOLE SPACING:  
2 5/8"X3 5/8" SLOTTED TO 3"X3"

ATTACHMENT BOLT SIZE:  
3/8"



1200 LBS

CASTER FEATURES

- LARGE 16MM DIAMETER RIVETED KINGPIN
- DOUBLE-ROW HRC40 HARDENED RACEWAYS
- 5/16" DIAMETER UPPER & 1/4" DIAMETER LOWER HARDENED STEEL LOAD BEARINGS
- ROBUST 1/4" X 2" WELDED LEG CONSTRUCTION
- 1/4" THICK TOP PLATE
- GREASE FITTING IN LOWER RACE
- CORROSION RESISTANT ZINC FINISH
- 1/2" GREASE AXLE WITH ALL-STEEL LOCK NUT



\*\*WIDE RANGE OF OTHER WHEEL MATERIALS AVAILABLE/CUSTOMIZABLE TO SUIT THIS SERIES CASTER. CONSULT CASTERWORLD FOR DETAILS\*\*



TPE WHEEL

MATERIAL TYPE	TPE / PP
IDEAL TEMPERATURE RANGE	MINUS 30 TO 70C
SHORE HARDNESS	80A
EASE OF ROLL UNDER LOAD	NOT RECOMMENDED
RESILIENCE/FLEXIBILITY	EXCELLENT
QUIETNESS	EXCELLENT
FLOOR PROTECTION	EXCELLENT
SHOCK ABSORPTION	EXCELLENT
WEAR	GOOD
CHEMICAL RESISTANCE	GOOD



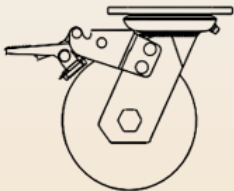
MPU WHEEL

MATERIAL TYPE	TPU / PP
IDEAL TEMPERATURE RANGE	MINUS 20 TO 120C
SHORE HARDNESS	98A
EASE OF ROLL UNDER LOAD	BETTER
RESILIENCE/FLEXIBILITY	GOOD
QUIETNESS	EXCELLENT
FLOOR PROTECTION	EXCELLENT
SHOCK ABSORPTION	EXCELLENT
WEAR	EXCELLENT
CHEMICAL RESISTANCE	GOOD

BRAKE OPTIONS

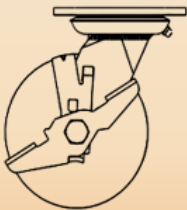
TL

TOTAL LOCK  
FOOT ACTUATED TOTAL LOCKING  
BRAKE WITH TAB RELEASE



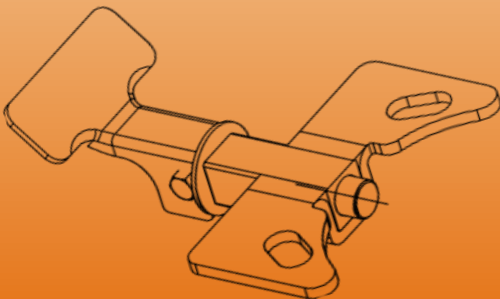
WL

WHEEL LOCK  
FOOT ACTUATED WHEEL BRAKE  
(AVAILABLE ON BOTH SWIVEL &  
RIGID CASTERS)



SL

SWIVEL LOCK  
FOOT ACTUATED 4-POSITION  
SWIVEL LOCK (FIELD MOUNTABLE)



NY WHEEL

MATERIAL TYPE	PA (6)
IDEAL TEMPERATURE RANGE	MINUS 20 TO 120C
SHORE HARDNESS	67D
EASE OF ROLL UNDER LOAD	BEST
RESILIENCE/FLEXIBILITY	EXCELLENT
QUIETNESS	NOT RECOMMENDED
FLOOR PROTECTION	FAIR
SHOCK ABSORPTION	NOT RECOMMENDED
WEAR	GOOD
CHEMICAL RESISTANCE	EXCELLENT



NYHD WHEEL

MATERIAL TYPE	PA (6)
IDEAL TEMPERATURE RANGE	MINUS 20 TO 120C
SHORE HARDNESS	67D
EASE OF ROLL UNDER LOAD	BEST
RESILIENCE/FLEXIBILITY	EXCELLENT
QUIETNESS	NOT RECOMMENDED
FLOOR PROTECTION	FAIR
SHOCK ABSORPTION	NOT RECOMMENDED
WEAR	GOOD
CHEMICAL RESISTANCE	EXCELLENT